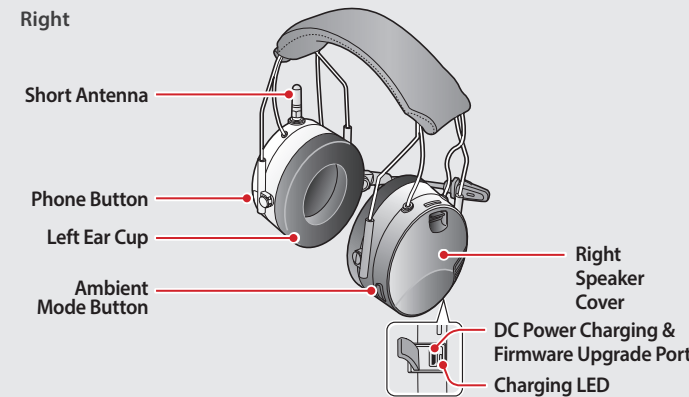
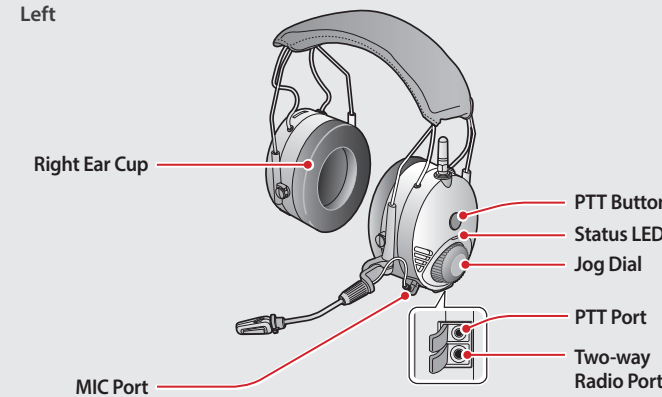
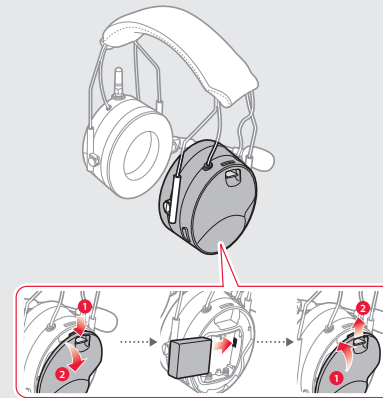


## PREPARATION

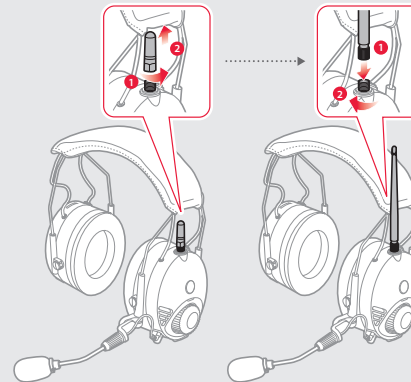
### Knowing the Headset Layout



### Installing the Battery

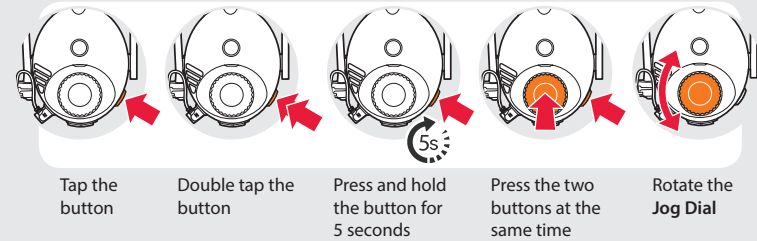


### Replacing the Antenna

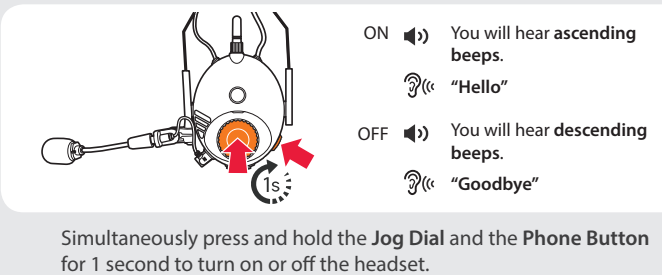


## BASIC OPERATION

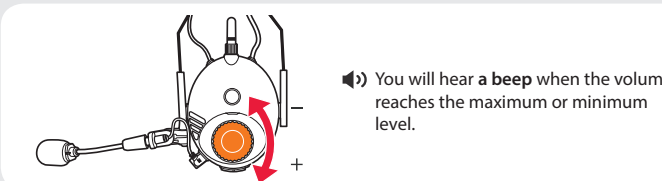
### Operating the Buttons



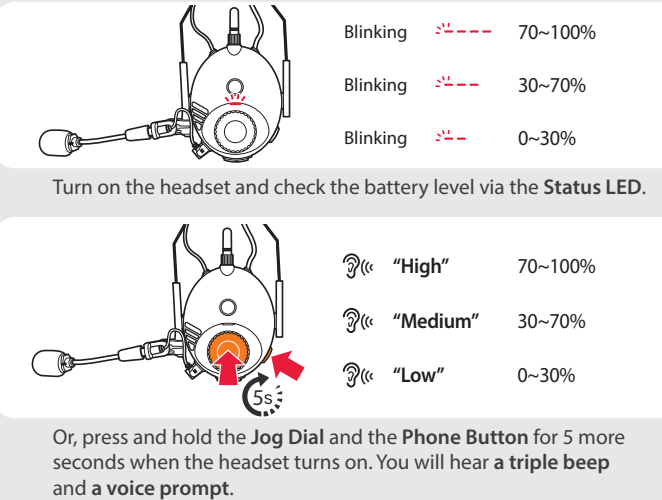
### Turning On/Off the Headset



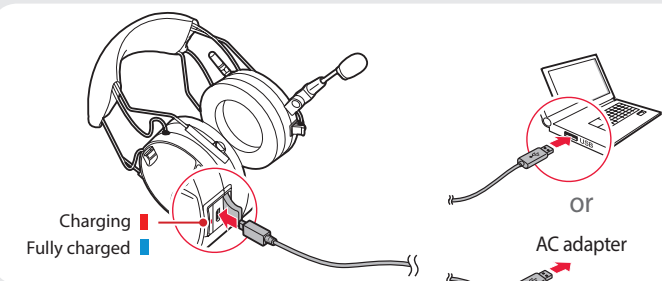
### Adjusting the Volume



### Checking the Battery Level

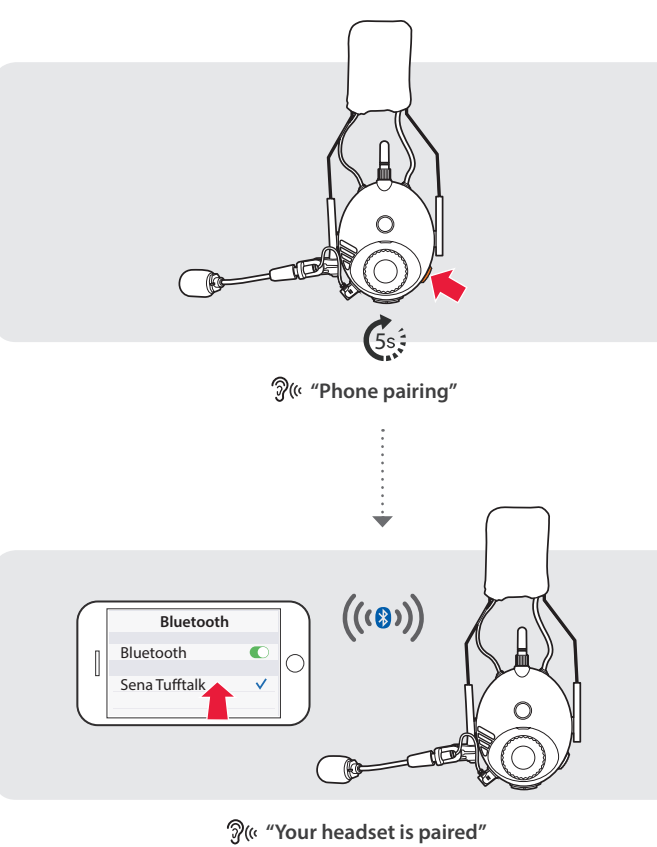


### Charging the Battery

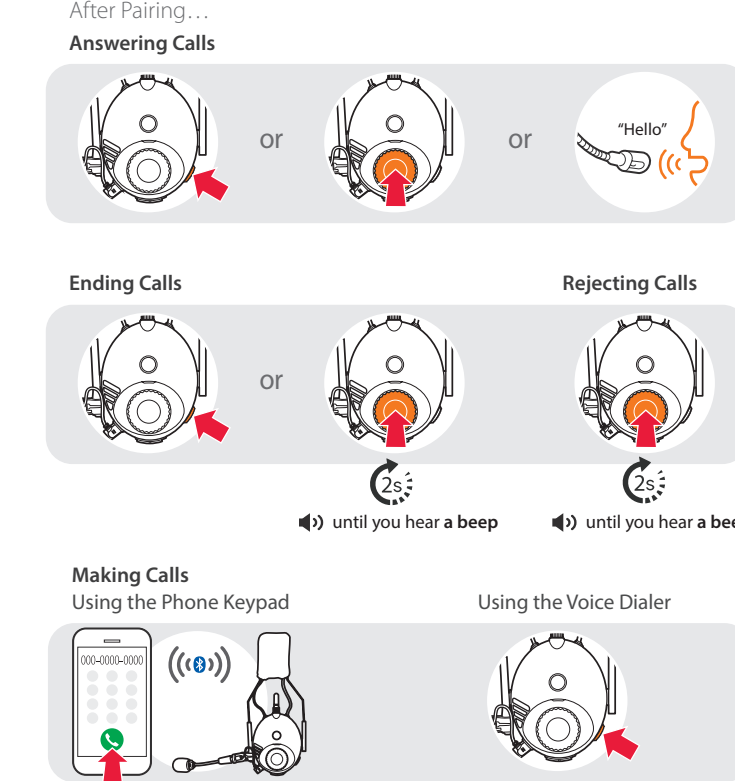


## PAIRING

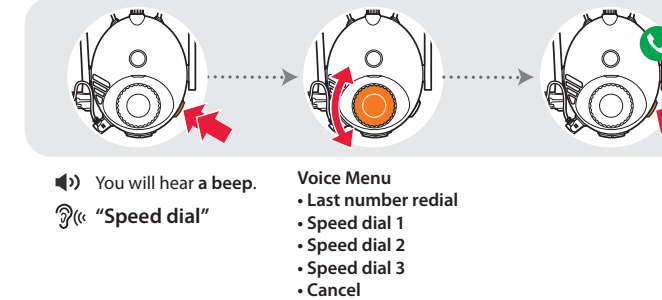
### Pairing with Mobile Devices - Phone, Music



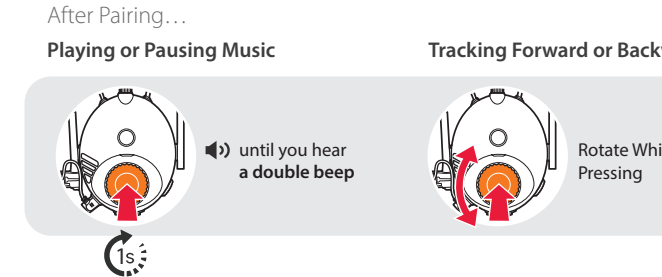
### Using Phone Features



### Using the Speed Dial



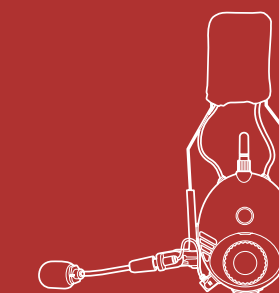
### Listening to Music



# TUFFTALK

## Quick Start Guide

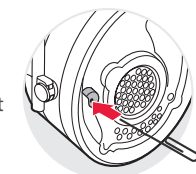
Industrial Bluetooth®  
Communication System



You can download the full version of the manual and view other Sena products at the Sena website: [www.sena.com](http://www.sena.com).

### TRUBLESHOOTING

- Factory Reset**  
If you want to restore the Tufftalk to factory default settings, press and hold the **Phone Button** for 10 seconds. Tap the **Jog Dial**. The headset automatically restores the default settings and turns off.
- Fault Reset**  
If the Tufftalk is not working properly for any reason, push the pin-hole reset button located below the left ear cup.



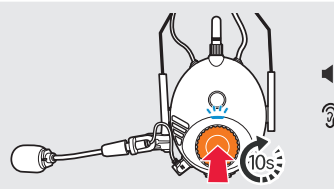
### OPTIONAL CABLE ACCESSORIES

<b>TUFFTALK-A0110</b> 2-way Radio Cable for Kenwood Twin-pin Connector	<b>TUFFTALK-A0114</b> 2-way Radio Cable for Yaesu Single-pin Connector
<b>TUFFTALK-A0111</b> 2-way Radio Cable for Motorola Twin-pin Connector	<b>TUFFTALK-A0115</b> 2-way Radio Cable for Midland Twin-pin Connector
<b>TUFFTALK-A0112</b> 2-way Radio Cable for Motorola Single-pin Connector	<b>TUFFTALK-A0116</b> 2-way Radio Cable with an Open End
<b>TUFFTALK-A0113</b> 2-way Radio Cable for Icom Twin-pin Connector	<b>TUFFTALK-A0117</b> 2-way Radio Cable with Straight Type for Midland or Icom Twin-pin Connector

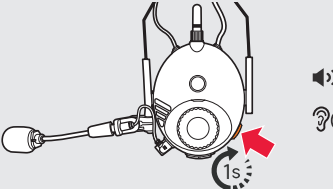
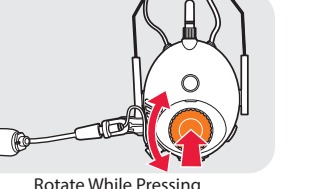
**SENA**   

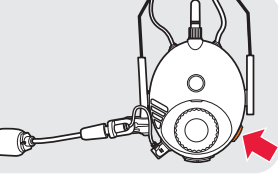
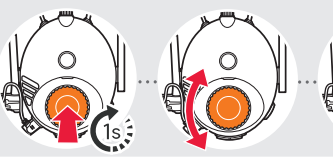
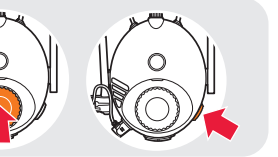
**Sena Technologies, Inc.**  
[www.sena.com](http://www.sena.com)  
 Customer Support: [support@sena.com](mailto:support@sena.com)  
 E-mail: [support@sena.com](mailto:support@sena.com)

### SETTING

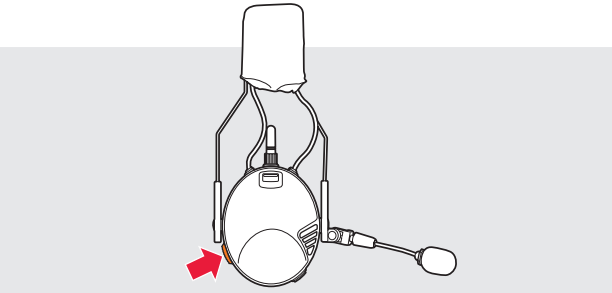
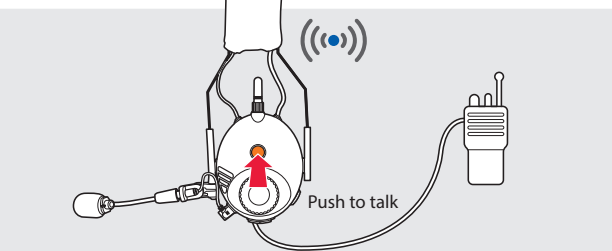
- Method1) Using the headset**  

  - You will hear a double beep sound.
  - ⓘ "Configuration menu"
- Method2) Using the Sena Device Manager**  
 Connect the headset to your computer via a USB cable. Launch the Sena Device Manager and click **DEVICE SETTING** to configure the headset settings.  
 For details about downloading the Sena Device Manager, refer to the leaflet included in the package.
- Method3) Using the Sena Smartphone App**
  - On your smartphone, download the Sena Smartphone App for Android or iPhone from Google Play or App Store. Refer to [www.sena.com/headset-app/](http://www.sena.com/headset-app/) for more details.
  - Pair your smartphone with the headset.
  - Run the Sena Smartphone App. Swipe the screen to the right and tap **Settings** to configure the headset settings.

### RADIO

- Turning On/Off the FM Radio**  

  - You will hear a double beep sound.
  - ⓘ "FM on" or "FM off"
- Seeking Stations**  


Rotate While Pressing
- Listening to Preset Stations**  

- Saving or Deleting Stations**
  - To Save**  

    - ⓘ "Preset (#)"
    - ⓘ "(#)"
    - ⓘ "Save preset (#)"
  - To Delete**  

    - ⓘ "Delete preset (#)"

### USEFUL FUNCTIONS

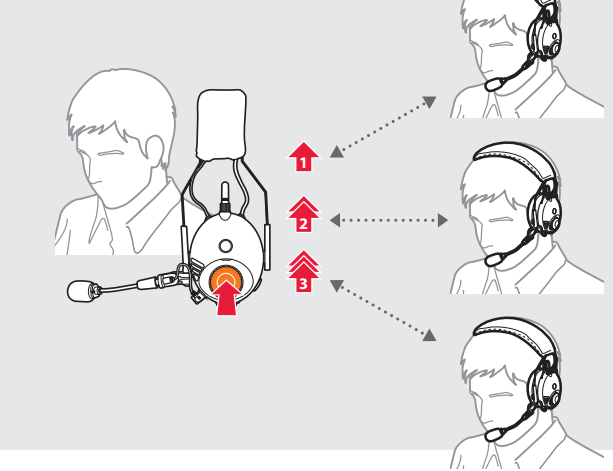
- Turning On/Off the Ambient Mode**  

- Using the Built-in Two-way Radio**  


Push to talk

First, connect the two-way radio cable with the headset.

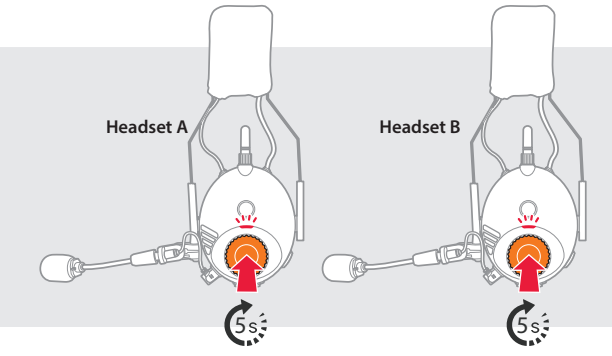
### Using the Intercom

After Pairing...



You can start or end a two-way intercom conversation with each headset.

### INTERCOM

- Pairing with Other Headsets**  

  - ⓘ "Intercom pairing"

Follow the steps above to pair with two or more headsets.